



ECONOMIC INDICATORS

5.5



Q2 2019 Gross Domestic Product

1.7



AUGUST 2019 Inflation Rate

52.22



Daily Peso - Dollar Exchange Rate

-1.3



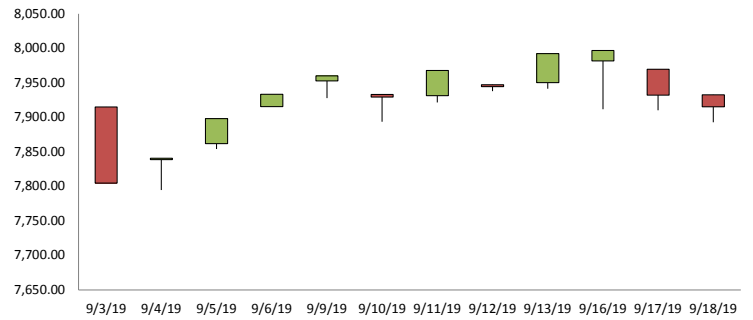
Q2 2019 Consumer Confidence

7.0



Q2 2019 Auto-buying Intention

PSE Composite Index



MACROECONOMIC SNAPSHOT



Renewable energy could cut electricity rates by 30% — report

HEAVY RELIANCE on imported fossil fuels, high financing costs and uncompetitive market structures have contributed to make electricity prices in the Philippines among the highest in Southeast Asia, according to a report of a global research institute.

[Read Article](#)



Gov't awards Bulacan airport project to San Miguel

THE DEPARTMENT of Transportation (DoTr) awarded on Wednesday the P734-billion Bulacan airport project to private proponent San Miguel Holdings Corp.

[Read Article](#)

INDUSTRY NEWS



LOCAL

SMC proposing 10-lane elevated roadway above EDSA

Ever since the start of the 'ber months, EDSA traffic has worsened. It has come to a point where outlandish proposals have been suggested in order to reduce vehicular volume along the 23.8 km highway.

[Read Article](#)



INTERNATIONAL

Mitsubishi teases small electric SUV ahead of Tokyo Motor Show

The 46th Tokyo Motor Show 2019 opens its doors from October 24 to November 24. With the event looming ever closer, manufacturers are working on what wares will wow show-goers. Mitsubishi, though, couldn't seem to wait — sort of.

[Read Article](#)

FINANCIAL TRENDS



PHL bond market's growth eases in Q2

THE PHILIPPINES was the second-fastest growing bond market in the second quarter among emerging East Asia region, even as expansion was at a "modest" pace amid slower government issuances, the Asian Development Bank (ADB) reported on Wednesday.

[Read Article](#)

Ver2.03112019

GLOBAL WATCHLIST



Trump is trapped between two impulses on Iran

Washington (CNN)President Donald Trump is stuck in a political box-- largely of his own making-- on Iran, a predicament that becomes more intractable with each alarming cycle of escalation.

[Watch Video](#)