



## ECONOMIC INDICATORS

5.6



Q1 2019 Gross Domestic Product

2.7



JUNE 2019 Inflation Rate

51.41



Daily Peso - Dollar Exchange Rate

-1.3



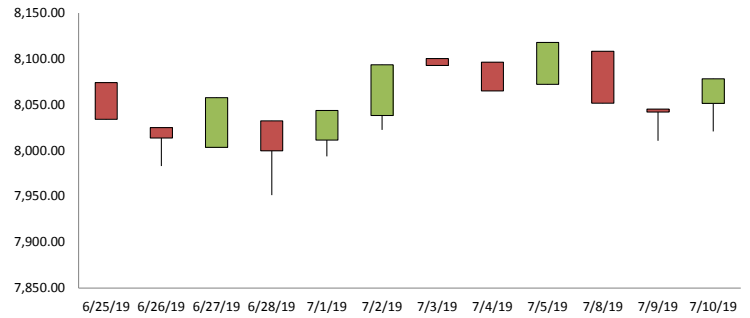
Q2 2019 Consumer Confidence

7.0

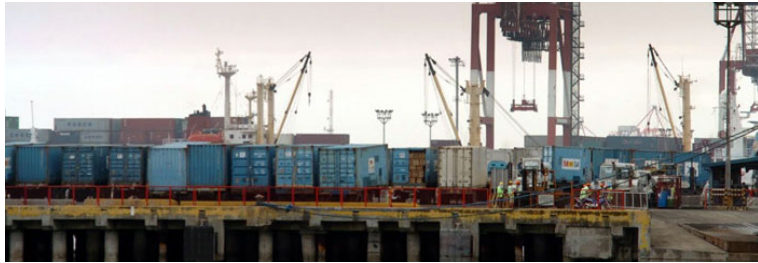


Q2 2019 Auto-buying Intention

PSE Composite Index



## MACROECONOMIC SNAPSHOT



### Trade-in-goods gap narrows in May

The country's trade-in-goods deficit narrowed in May as a slight export growth steadied while imports contracted, the Philippine Statistics Authority (PSA) reported on Wednesday.

[Read Article](#)



### Bol OK's 27% more investment pledges

THE BOARD of Investments (BoI) approved 27.4% more committed investments last semester from a year ago, fueled especially by power projects, the agency said in a press release on Wednesday.

[Read Article](#)

## INDUSTRY NEWS



### LOCAL

### Geely is coming back, and they are opening beside SM North EDSA

Sojitz will be new distributor of Geely in the Philippines

[Read Article](#)



### INTERNATIONAL

### Hyundai teases all-new model before Frankfurt debut

According to the Korean carmaker, the mysterious model will be part of its European line-up, and there's also a sketch to give us a very vague idea of what it will be.

[Read Article](#)

## FINANCIAL TRENDS



### Demand for term deposits up as BSP doubles offer volume

BANKS' DEMAND for term deposits rose on Wednesday as the Bangko Sentral ng Pilipinas (BSP) doubled the amount on offer.

[Read Article](#)

## GLOBAL WATCHLIST



### Bye bye, VW Beetle

Volkswagen ended the production of the iconic Beetle at the company's assembly plant in Puebla, Mexico on Wednesday, as the Beetle drives off into automobile history. Gavino Garay has the story.

[Watch Video](#)