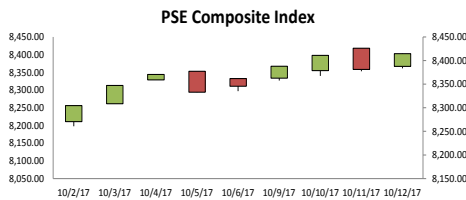




ECONOMIC INDICATORS

| | | | |
|---|-------------|---|--|
| | 6.5 | 3.40 | |
| Q2 2017 Gross Domestic Product | | September 2017 Inflation Rate | |
| | 10.2 | 7.6 | |
| Q3 2017 Consumer Confidence | | Q3 2017 Auto-buying Intention | |
| 51.43 | | | |
| Daily Peso – Dollar Exchange Rate | | | |



GLOBAL WATCHLIST



Brexit talks deadlock on cash

British and EU negotiators have hit a dead-end over money in four days of talks, the European Union's Michel Barnier said on Thursday as he ruled out discussions on future trade being allowed to start by EU leaders next week. David Pollard reports.

[FULL STORY HERE](#)

MACROECONOMIC SNAPSHOT

Hot money reverts to net inflow in Sept

Foreign portfolio investments reverted to a net inflow in September as investors cheered the approval of the first package of the comprehensive tax reform program by the Senate.



[FULL STORY HERE](#)

Economic team moves to stir US interest

Economic managers of President Rodrigo R. Duterte have made an investment pitch in New York, telling American investors to be part of the Philippines' "exciting growth story" over the long term, in statements that underscored the Asian economy's desire to buoy its pallid foreign direct investments (FDIs).



[FULL STORY HERE](#)

FINANCIAL TRENDS

Index hits new peak, breaches 8,400

The stock market reached a new milestone yesterday, closing for the first time above the 8,400 mark.



[FULL STORY HERE](#)

INDUSTRY NEWS

Jeep modernization rolls out in '18

The government will finalize before the end of the year the Public Utility Vehicle (PUV) program and roll it out by the middle of 2018, according to Ramon Lopez, secretary of the Department of Trade and Industry (DTI).



[FULL STORY HERE](#)

INTERNATIONAL

J.D. Power Survey Rates Kia, Volvo Most Dependable

The J.D. Power 2017 U.K. Vehicle Dependability Study, now in its third year, measures problems experienced during the previous 12 months by original owners of vehicles in the U.K. after 12-36 months of ownership. Kia and Volvo tie for No.1 in vehicle dependability among all brands, with a score of 83 PP100. Skoda ranks third with 89 PP100, followed by Suzuki with 92 PP100.



[FULL STORY HERE](#)

