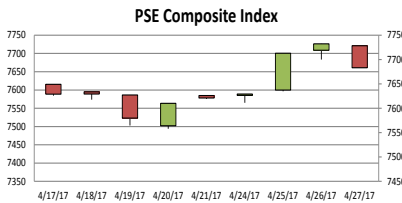




## ECONOMIC INDICATORS

	<b>6.6</b>	<b>3.40</b>	
<a href="#">▶ Q4 2016 Gross Domestic Product</a>		<a href="#">▶ March 2017 Inflation Rate</a>	
	<b>8.7</b>	<b>7.1</b>	
<a href="#">▶ Q1 2017 Consumer Confidence</a>		<a href="#">▶ Q1 2017 Auto-buying Intention</a>	
	<b>49.95</b>		
<a href="#">▶ Daily Peso – Dollar Exchange Rate</a>			



### MACROECONOMIC SNAPSHOT

#### Credit watchdogs still bullish on PH

Credit-rating agencies remained “impressed” with the Philippine economy’s solid fundamentals that are seen to attract more foreign direct investment even as they urged the government to ramp up revenues as well as focus on reducing poverty and income inequality, the country’s chief economist said.



[FULL STORY HERE](#)

#### Talk Beijing into trade if not sea row, ASEAN told

The Philippines must take the lead in bringing down trade barriers to deepen economic integration and urge China to prove its sincerity in cooperating with the region when Manila holds the next Association of Southeast Asian Nations (ASEAN) leaders’ meeting in November.



[FULL STORY HERE](#)

### FINANCIAL TRENDS

#### Country’s foreign debt service burden eases to \$949 M in Jan.

With a lower debt service ratio (DSR), the country’s external debt service burden (DSB) dropped to \$949 million in January, down by 3.5 percent year-on-year or from \$984 million.



[FULL STORY HERE](#)

### INDUSTRY NEWS

#### DOTr to release framework for jeepney upgrading

Jeepneys fifteen years and older will soon be taken out from the streets once the Department of Transportation (DOTr) comes out with a guideline that will finally start off the implementation of the much delayed jeepney modernization program.



[FULL STORY HERE](#)

### GLOBAL WATCHLIST



#### 100 days: Asia at the heart of Trump’s foreign policy

From TTP to North Korea, Asia has been at the very centre of Donald Trump’s foreign policy. Graham Mackay takes a look at some of the highlights and key shifts in Trump’s relations with Asian powers.

[FULL STORY HERE](#)

### INTERNATIONAL

#### Mitsubishi Motors is now largest auto exporter in Thailand

Out of all the global automotive manufacturers with production plants in Thailand, one has emerged as the country’s top exporter for the fiscal year 2016.



[FULL STORY HERE](#)

